

# Bunloit estate update

Calum Brown

# Meet the team



Dr Jeremy Leggett

Chief Executive Officer



Dr Penelope Whitehorn

Co-Chief Scientist



Dr Calum Brown

Co-Chief Scientist



Keir Smith

Head of Forestry and Woodlands



Daniel Holm

Senior Ranger



Scott Hendry

Field Ecologist



Maggie English

Executive Assistant



Oliver Morgan

Ranger



Aki Maruyama-Leggett

Coordinator, Education and Art



## Our short-term objectives for Bunloit are:

**Peatlands** - We are working with Peatland ACTION to restore our degraded peatlands and improve carbon storage. Plans are in place to start work in the winter of 2023/2024, including in areas of cleared coniferous plantations (forest to bog restoration).

**Grasslands** - We will continue to graze a small herd of Highland cattle, owned and managed by a neighbouring farmer, across the grasslands to maintain and boost biodiversity. We are reducing bracken encroachment through mechanical control, targeted grazing and tree planting.

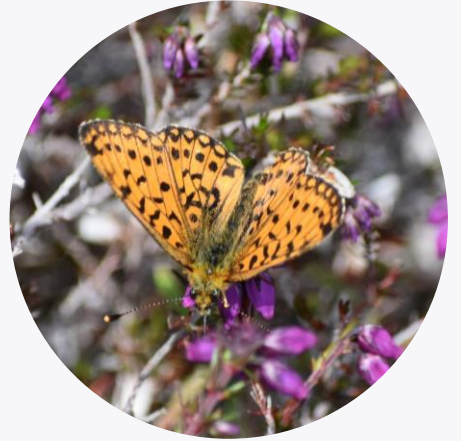
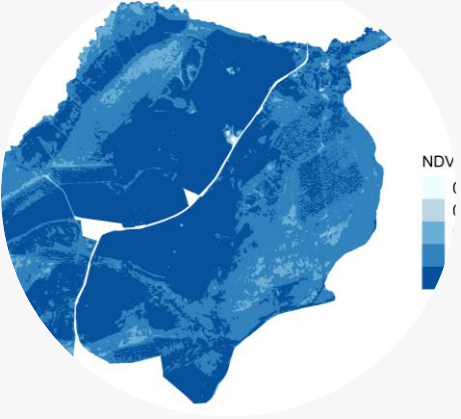
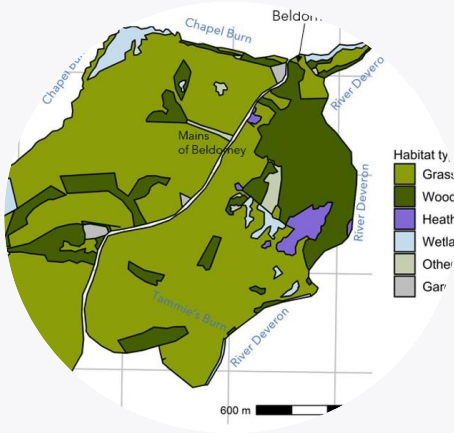
**Forest management** - We will manage the remaining forestry compartments sensitively, with the aim of gradually thinning over time and replacing with native broadleaves, allowing natural regeneration to occur and spread out from the edges. We will create clearings within forests and leave deadwood standing and lying. We are investigating potential invertebrate reintroductions (starting with wood ants).

**Agro-forestry** - We will continue with our small forest garden, planting additional fruit and nut trees, interspersed with fruit bushes. This is located adjacent to the farm buildings and holiday cottages to maximize visitor and community interactions and benefit.

**Forest Regeneration** - Our native deciduous woodlands are currently showing signs of over-browsing and there is little natural regeneration or understory. We will increase deer control to enable natural forest regeneration.

**Community** - We will continue our programme of community engagement and school classes, encourage access to the estate through improved signage and footpaths, while developing other opportunities for community involvement in land management.

# Monitoring & research

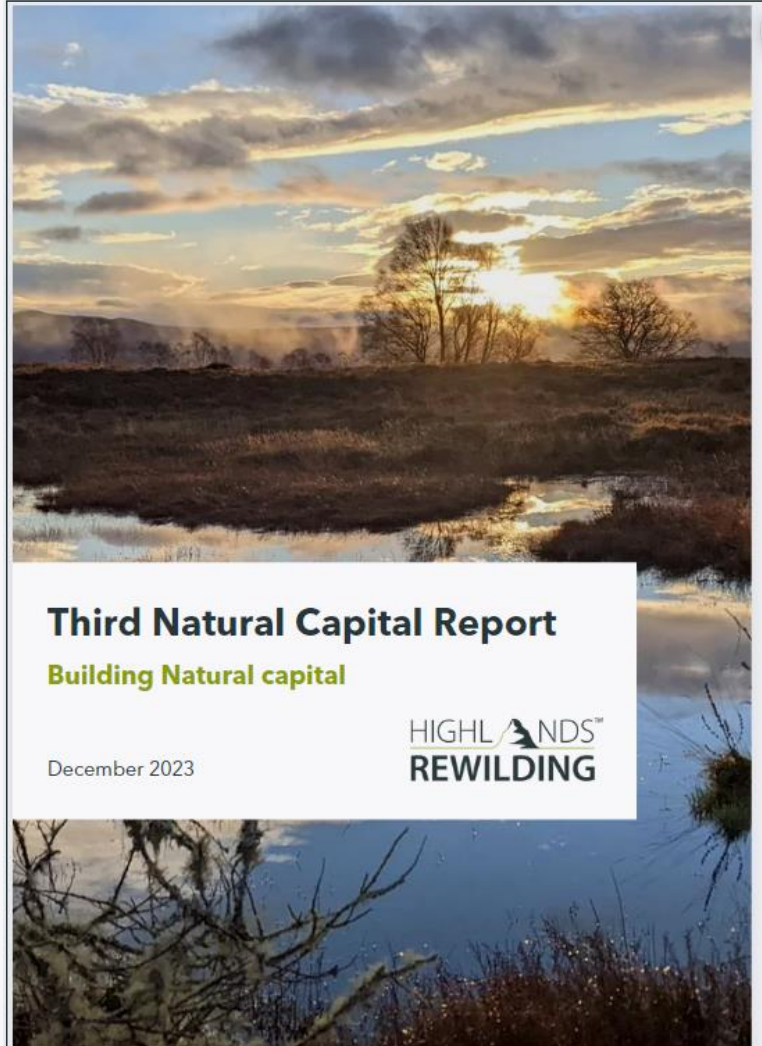
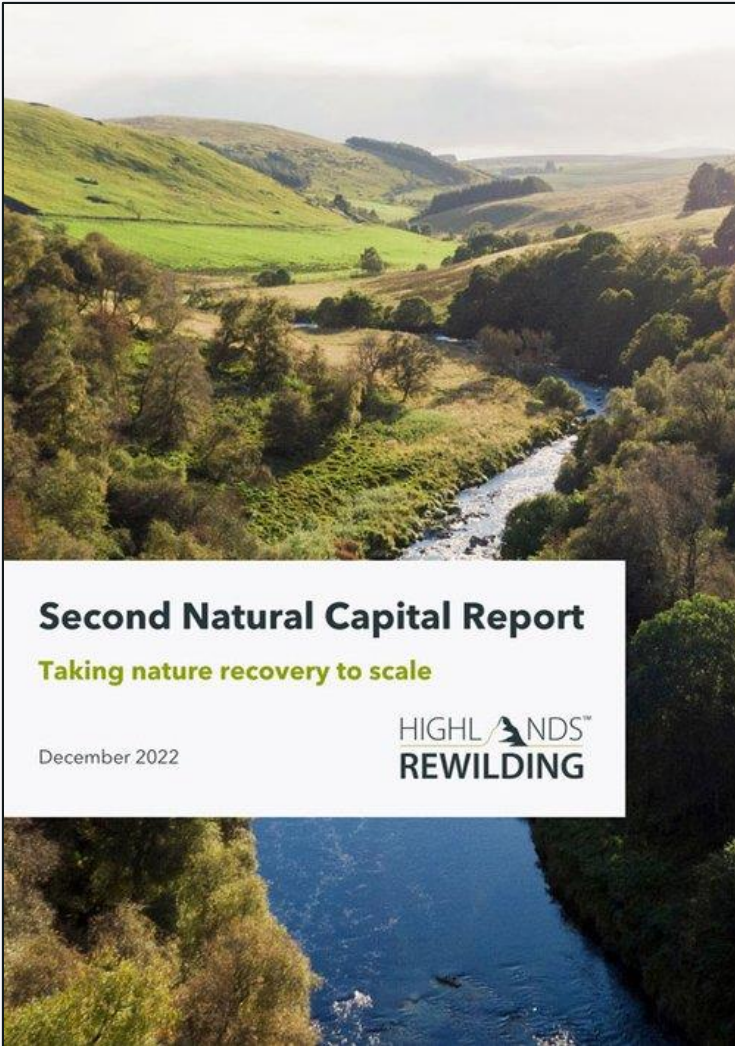
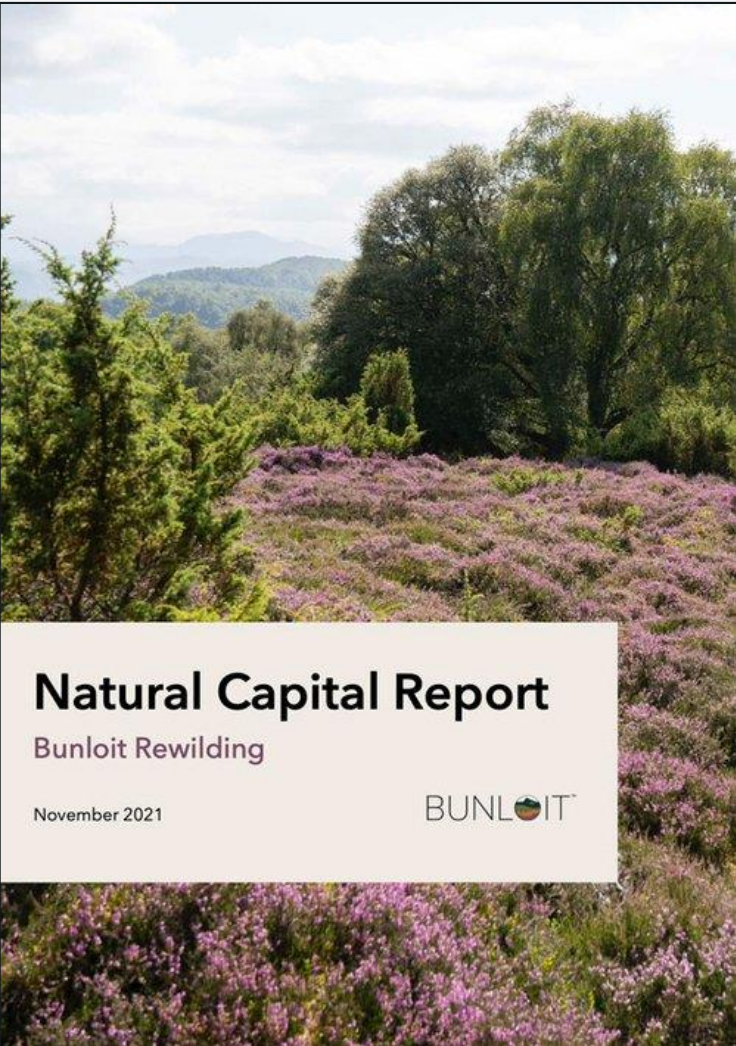


# Monitoring & research

Biodiversity measure:	Notes
<b>1. Habitats</b>	<b>Satellite, plane, drone &amp; field surveys</b> (for extent & condition)
<b>2. Higher plant diversity</b>	Botanical surveys with <b>quadrats</b>
<b>3. Terrestrial invertebrates</b>	Malaise & pitfalls for <b>DNA metabarcoding</b> , transects & other monitoring
<b>4. Soil biodiversity</b>	<b>DNA metabarcoding</b> by NatureMetrics (inverts & fungi)
<b>5. Aquatic invertebrates</b>	<b>eDNA</b> analysis by NatureMetrics
<b>6. Breeding birds</b>	Surveys by <b>ecologists</b> and <b>acoustic</b> sensors.
<b>7. Animals</b>	<b>Camera traps</b> with consistent coverage

**Carbon:** Soil sampling, remote sensing & modelling. Initial calculations give between **845,472 and 1,234,334 tCO<sub>2</sub>e** stored on the estate, mostly in degraded peat.

# Monitoring & research



# Community involvement

We aim to involve (& empower) the community more in the future. One approach, developed at Tayvallich estate:

- A Memorandum of Understanding between HR and the Tayvallich Initiative, with 24 objectives for estate management
- Maintain & protect tenancies
- Maintain (at least) current number of jobs, retain & build skills
- Housing/smallholding developments under Rural Housing Burden
- Sale of land & buildings to community at cost/valuation
- Representative Local Management Board with devolved operational powers
- First refusal on any land sales
- Improved access
- 'Community baseline' to be defined and measured



# Facility for Investment Ready Nature in Scotland (FIRNS)

## Joint Ventures for Scalable Community Benefits from Rewilding

18 month project

The JVs will explore **new ways to benefit from the ecosystem services derived from the restoration of natural capital.**

At the end of the project we will have several joint ventures with communities local to our three estates which have investment-ready business plans. We would then seek the investment needed to take these forward.

Initial ideas, for example: deer larder, sustainable local timber, 'food forest' expansion



# Community Action Plan potential

Scope to contribute to Community Action Plan implementation on Bunloit

- 1.2: better health & wellbeing opportunities (access, activities, volunteering...)
- 1.3: more affordable & energy efficient housing
- 1.4: green skills & youth apprenticeships
- 1.4: using green finance and renewable energy/low carbon funds to increase community financial reserves
- 1.4: supporting responsible tourism measures
- 2.1: active travel & leisure route network
- 2.3: conserving & improving access to cultural heritage
- 2.4: Closer working with land managers to ensure community needs are accommodated
- 2.4: Greater community response to the climate and biodiversity emergencies through practical action

Questions?

# Bunloit Classified Species: June - September

